



万邦集团
APACHE FOOTWEAR



Sustainability Newsletter



Vol. 02

March 2024

Publisher : Group HR / SEA
Editor : Bertha Tseng



Committed to Sustainability, Embracing Renewable Energy!



Why We Choose Renewable Energy?

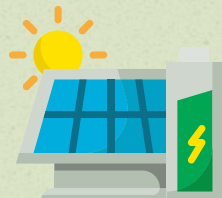
As global climate change gains attention, businesses play a vital role in sustainability.

Renewable energy can be continuously regenerated, sustainably utilized, and is inherently inexhaustible and environmentally sustainable. These resources have minimal harm to the environment, are widely distributed, and are suitable for local development and utilization. It helps mitigate climate change and promotes sustainability.

A Few Common Sources of Renewable Energy



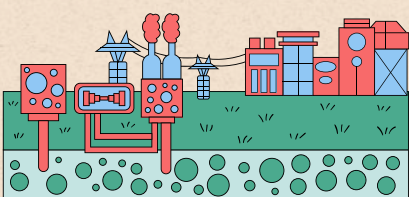
Hydro Power



Solar Energy



Biomass Energy




Geothermal Energy




Wind Energy

Benefits of Renewable Energy

 Save Energy Costs; Enhance Business Competitiveness

 Stable Energy Supply; Less Reliance on Traditional Energy

 Clean and Recyclable; Practicing Sustainable Development

 Social Responsibility and Sustainable Image



4 Renewable Energy Approaches We Adopt:



Directly Install Renewable Energy Devices



Purchase Green Energy



Generate Solar Power



Renewable Energy Certificates

APACHE FOCUS - ENVIRONMENT RENEWABLE ENERGY: SOLAR ENERGY



In 2023, APE achieved 100% rooftop solar coverage, generating about 8% of monthly electricity and reducing carbon emissions by around 1,280 tCO2e per year!



In 2023, rooftop solar panels at APC generated nearly 10% of the monthly electricity, reducing carbon emissions by about 1,570 tCO2e per year!

The **green certificate (Unbundled EACs)**, signifying the use of renewable energy, is available for purchase and applicable to regular power supplies. In APH, we've actively purchased the green certificates, fostering sustainable development.

APE also advances towards a greener supply chain and processes by **purchasing green energy**, 19.4% electricity we used is from renewable energy in 2023 -- a significant step in our commitment to environmental responsibility!





APACHE FOCUS - SOICAL HOME VISITS & EMPLOYEE CARE



**At Apache, we're not just colleagues – we're FAMILY!
In 2023, we visited 377 employee families.**

APE offers kindergarten, summer camps, and parent-child activities, fostering an ideal and caring environment for the next generation.



Kindergarten



Scholarship Program

APH and APC are committed to cultivating outstanding talents, offering scholarship programs for local students!

In APC, we offer childcare facility, leisure park, and the construction of the first local reservoir, creating a loving living environment for employees and residents!



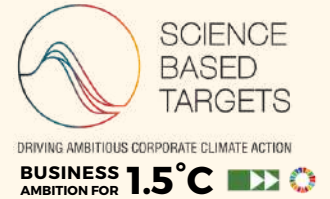
Crèche

»»» Pregnancy Employee Care

Offering support for pregnant and lactating employees with facilities like lactation rooms, dedicated dining areas, reserved seats, and regular medical consultations, ensuring their safety and enhancing female staff's health and welfare.



Apache's Sustainability Learning Hub - SBTi



What is SBTi ?

Science Based Targets initiative(SBTi) is the world's first "net-zero carbon emissions standard," aiming to limit global temperature rise to 1.5°C. This global initiative helps businesses establish and implement scientifically-aligned emission reduction targets, making commitments more specific, achievable, and impactful in the fight against global warming, contributing to a more sustainable future.

★ Our Milestones ★



2022. 09
Commitment Submitted



2023. 08
Set up and Submitted SBT Target



2024. 03
Passed SBT Target Validation



2024. 11
Disclose 2023 Decarbonization Results

Why is it Important?

1. Take Climate Actions

As our society places growing emphasis on corporate sustainability, engaging in SBTi not only signifies commitment but also actively responds to societal expectations. It highlights our efforts in sustainable development, enhancing the company's brand image.

2. Reduce Costs, Enhance Competitiveness

Through effective emission control and optimized energy usage, we can achieve cost savings in energy. Simultaneously, reducing unnecessary waste and improving production efficiency also contribute to an overall reduction in business costs.

3. Enhance environmental compliance and create a sustainability culture

Amidst the global drive for sustainable development, countries are tightening regulations on corporate carbon emissions. Joining SBTi ensures compliance with current rules and prepares us for the future. Proactively adapting to global sustainability trends helps us to stay agile and address challenges.

